

PLEASE LEAVE THESE INSTRUCTIONS WITH THE CLIENT

Easy to use, a single control is used to slide the opaque and translucent woven stripes past each other. The same operation is used to raise or lower the window blind to any height in the window with ease, in the same way the classic roller blind would. A sheer vision blind will also roll up fully into the attractive cassette headrail to reveal an uninterrupted view to the outside.

☰ Raising and Lowering the Blind

1. After installing using the chain, draw the blind up and down twice to settle the blind after transporting and to also check that the fabric is not rubbing against any obstacles. This can damage the blind if left untreated.
2. The chain should **never** be pulled on an angle, just straight up or down in a vertical motion. This stops fabric being damaged, limits noise, and allows blind to lift evenly.
3. Install the child safety device by ensuring the chain is tangle free and then mounting to the desired location keeping the chain in a straight line down from the control mechanism. Use screw to fix each cleat or tensioning device in a place that is out of reach of children. Never secure these devices with materials that fail when a load is placed on them, such as double-sided tape or glue.
4. The appropriate tension required on the chain can be achieved by pulling down firm and then releasing that tension by approximately 5mm. Most importantly the chain must not be able to form a loop with a circumference equal to or greater than 220mm, as per the child safety legislation. See over page for further Children's safety information as per Trade Practice – Consumer Product Safety Standard – Corded Internal Window Coverings) Regulations 2010 (2010 No.212).

● Maintenance and cleaning

Regularly remove surface dust gently with a clean dry soft cloth, feather duster or soft brush or wipe with a dry sponge.

Recommended cleaning agent is mild detergent in lukewarm water.

Stains and smudges can be removed with lukewarm water and neutral soap on a sponge. The sponge should be squeezed almost dry.

Fabric may be sponged but severe rubbing should be avoided. White spirits may be used for spot cleaning; methylated spirits (ethanol) and dry cleaning solvent (Perc) must not be used. If commercial spot cleaners are used, then instructions regarding testing of an inconspicuous area should be followed.

For any cleaners used, first test and allow to dry on an inconspicuous area to ensure compatibility.

For removing small marks an art gum eraser can be used with light rubbing.

Please note that all fabrics fade from UV exposure. If blinds are left up for a long time without being pulled down regularly, all fabrics will fade unevenly. Fabric will fade evenly if blinds are down during the day, getting even UV exposure. When fading occurs in that instance, it is even across the entire fabric and is not noticeable.

The open weave on the sheer section of Vision fabrics may have a tendency to fray. Carefully trim any fray on this fabric with *sharp* scissors. It is important that no rubbing is done on this part of the fabric.

Professional ultrasonic cleaning can be undertaken by specialist cleaning businesses.

○ Warranty

Betta Blinds and Awnings guarantee the quality on all our specified fabrics free from defects for one (1) year from date of purchase. All fabrics manufactured by Betta Blinds are cut using Ultrasonic or Aeronaut Fabric Cutting Technology, this is essential for cutting square and to aid the elimination of fabric fray. Due to this technology we are able to guarantee our fabrics against fault of manufacture.

Betta Blinds guarantee the quality on all our blind components free from defects and/or failure for five (5) years from the date of purchase. The guarantee on Betta Blinds products does not cover defects or damage caused by accidents, alterations, misuse, abuse, wear and tear or failure to comply with cleaning, maintenance and operating instructions.

The sheer section of Vision fabric can have a tendency to fray and it is the nature of this open weave fabric. Blinds will not be replaced for fraying. It is important that the chain or any other obstacle is not rubbed against the fabric during operation. Betta Blinds does not warranty the fading of fabrics caused by direct and/or indirect sunlight. Under the guarantee Betta Blinds shall not be liable or responsible for incidental or consequential damages or any other direct or indirect damage, loss, cost, expense or fee.

Sheer Vision Fabric

Sheer Vision Blinds Fabric: See close up photos of the Capri fabric which shows the inherent nature of the fabric and the open weave. The cut edge cannot be heat sealed and there is no fabric sealant that is compatible with the fabric.

The fabric does have a tenancy to fray, as it is the nature of this delicate open weave, and as such it is within manufacturing acceptances. Blinds will not be replaced for fraying of this type.

Carefully trim any fray on this fabric with very sharp scissors. It is important that no rubbing is done on this part of the fabric.

The chain should **never** be pulled on an angle, just straight up or down in a vertical motion. This stops fabric being damaged, limits noise, and allows blind to lift evenly.

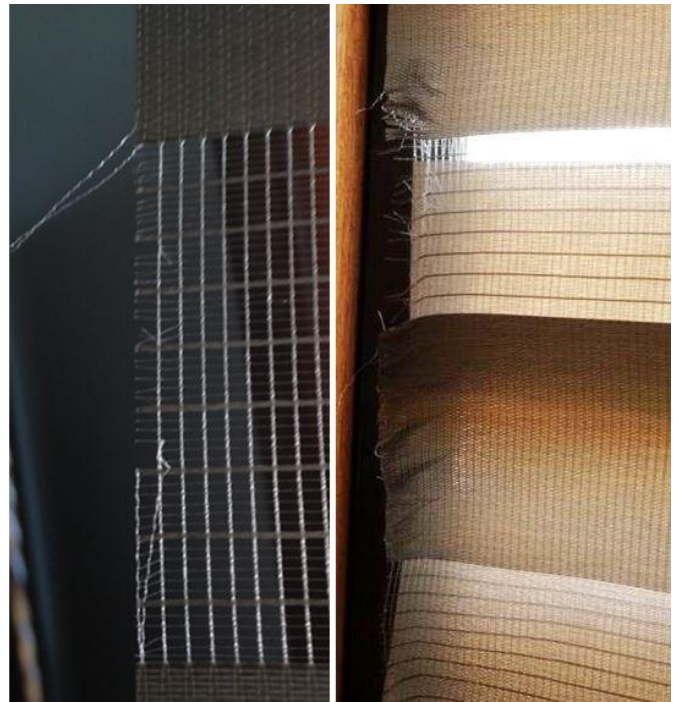
If there is a manufacturing fault and the fabric is damaged, as in Pic. 4, the blinds will be replaced. In this example fabric was caught within the mechanism.



Pic. 1



Pic. 2



Pic. 3



Pic. 4



WARNING:

CURTAIN AND BLIND CORDS HAVE CAUSED THE DEATH OF YOUNG CHILDREN AND MUST BE INSTALLED SO THAT THEY ARE NOT A STRANGULATION HAZARD. FOLLOW THE INSTALLATION INSTRUCTIONS

Keep children away from all cords/chains

Move anything a young child can sit in, stand in or climb on (like cots, highchairs, beds, sofas, tables, chairs and bookshelves) away from cords/chains—even those tied around a cleat, as your child may be able to untie them.

Do not let your child play near cords/chains they can easily reach.



IMPORTANT CHILDREN'S SAFETY REGULATIONS:

- ♦ To avoid creating a possible strangulation hazard for children, the corded internal window covering must be installed in such a way that a loose cord cannot form a loop 220mm or longer at a height of less than 1,600mm above floor level.
- ♦ A cord guide may be installed lower than 1,600mm above floor level if the cord is sufficiently secured or tensioned to prevent a loop.
- ♦ If a cord guide is installed lower than 1,600 above floor level it must be designed to prevent a child from being able to remove the cord.
- ♦ If a cleat is used to secure the cord it must be at least 1,600mm above floor level because a child is capable of unwinding a cord from a cleat.
- ♦ A label must be attached to the corded window covering *containing the name and the contact details of the company or person responsible for the installation.*
- ♦ You also must ensure that any warning label or swing tag supplied with the corded window covering remains attached to the cord.