

Please Note: These instructions should be read thoroughly before installing.

This is a guide to assist in the installation and care of your blinds. Betta Blinds and Awnings do not guarantee the accuracy of the information contained in this guide. We recommend an experienced expert installer to rely upon their own skills. This is based on general knowledge concerning the assembly, materials and working process of the blinds, which is known to us at the time of printing this guide, consequently, is subject to change and Betta Blinds and Awnings specifically reserves the right to change this guide without notification.

♦ **The person installing a corded internal window covering must attach a label to the corded window covering containing the name and contact details of the person or company responsible for the installation.**
♦ **They also must ensure that any warning label or swing tag supplied with the corded window covering remains attached to the cord.**

We recommend the use of the following Tools: Spirit Level, Steel measuring tape, Carpenter's level, Power or battery drill & bits, Flat blade and Phillips head screwdrivers, Screwdriver (to remove brackets)

The following should be included for each Sheer Vision Blind ordered: Installation brackets, attached to the top of the pelmet. Child safety tensioner (2 in the case of Linked Blind). Installation gloves

Sheer Vision: The blinds installed in a Vogue & Louvolite pelmet are already assembled with the blind mounting brackets attached to the top of the pelmet.

For longer Sheer Vision Blinds two people may be needed to install the pelmet.

🌀 **We recommend clean, soft cotton gloves** (or the rubber gloves supplied) **be worn to avoid marking the fabrics when installing and handling fabric blinds.**

Since different screws are required to suit different fixing applications, we do not supply screws. Please ensure you use the correct screws for mounting to the desired application, for example Gyprock, timber, concrete, brick, steel, or aluminium.

The most important procedure in installing these blinds is to be sure that the correct anchorage method has been used so that the mounting area (i.e., wall or architrave) is able to support the weight of the blind and its operation.

🌀 **Brick or Rendered Surfaces Warning:** Make sure drilling is no closer than 25mm from edge of surfaces as the brick or render may chip or break out.

Face Fit

1. Check the marked width and drop sizes as indicated on the headbox against your original order.
2. Each blind is marked to indicate the room location, as per your order form, to assist in establishing the correct fitting location of multiple blind orders.
3. If all is correct layout the blinds at their location and remove protective packaging.
4. Using a screwdriver remove the supplied installation brackets from the top of the pelmet.
5. Untangle the operating chain from the shipping position.
6. Evenly space and screw the brackets along the front of the architrave or wall for even load bearing distribution. The end brackets should be mounted no further than 200mm from the end of the blind.
7. Check that all brackets are straight. Once the brackets have been installed and the levels checked the pelmet is ready to be installed.
8. Angle pelmet slightly downwards while at the same time placing the middle lip of the pelmet onto the front of the bracket clip.
9. Straighten the pelmet in an upwards motion until it snaps into place. If correctly installed, you will hear the pelmet snap in place.
10. Engage all brackets working from one side to the other. Check that each bracket is secure in place before moving to the next.

NOTE: For longer pelmets you may find it easier to the lock middle bracket clips in place first.

11. Wipe fingerprints off pelmet if any.

Reveal Fit

1. Check the marked width and drop sizes as indicated on the headbox against your original order.
2. Each blind is marked to indicate the room location, as per your order form, to assist in establishing the correct fitting location of multiple blind orders.
3. If all is correct layout the blinds at their location and remove protective packaging.
4. Remove the supplied installation brackets from the top of the pelmet.
5. Untangle the operating chain from the shipping position.
6. Evenly space and screw the brackets along the top of the reveal for even load bearing distribution. The end brackets should be mounted no further than 200mm from the end of the blind.
7. Check that all brackets are straight. Once the clips have been installed and the levels checked the pelmet is ready to be installed
8. Angle pelmet slightly downwards while at the same time placing the middle lip of the pelmet onto the front of the clip.
9. Straighten the pelmet in an upwards motion until it snaps into place. If correctly installed, you will hear the pelmet snap in place.
10. Engage all brackets working from one side to the other. Check that each bracket is secure in place before moving to the next.

NOTE: For longer pelmets you may find it easier to the lock middle clips in place first.

11. Wipe fingerprints off pelmet if any.

NOTE: If you need to take the pelmet down use a screwdriver to pop the clips off

Raising and Lowering the Blind

1. After installing using the chain, draw the blind up and down twice to settle the blind after transporting and to also check that the fabric is not rubbing against any obstacles. This can damage the blind if left untreated.
2. The chain should **never** be pulled on an angle, just straight up or down in a vertical motion. This stops fabric being damaged, limits noise, and allows blind to lift evenly.
3. Install the child safety device by ensuring the chain is tangle free and then mounting to the desired location keeping the chain in a straight line down from the control mechanism. Use screw to fix each cleat or tensioning device in a place that is out of reach of children. Never secure these devices with materials that fail when a load is placed on them, such as double-sided tape or glue.
4. The appropriate tension required on the chain can be achieved by pulling down firm and then releasing that tension by approximately 5mm. Most importantly the chain must not be able to form a loop with a circumference equal to or greater than 220mm, as per the child safety legislation. See over page for further Children's safety information as per Trade Practice – Consumer Product Safety Standard – Corded Internal Window Coverings) Regulations 2010 (2010 No.212).

● Maintenance and cleaning

Regularly remove surface dust gently with a clean dry soft cloth, feather duster or soft brush or wipe with a dry sponge.

Recommended cleaning agent is mild detergent in lukewarm water.

Stains and smudges can be removed with lukewarm water and neutral soap on a sponge. The sponge should be squeezed almost dry.

Fabric may be sponged but severe rubbing should be avoided. White spirits may be used for spot cleaning; methylated spirits (ethanol) and dry-cleaning solvent (Perc) must not be used. If commercial spot cleaners are used, then instructions regarding testing of an inconspicuous area should be followed.

For any cleaners used, first test and allow to dry on an inconspicuous area to ensure compatibility.

For removing small marks an art gum eraser can be used with light rubbing.

Please note that all fabrics fade from UV exposure. If blinds are left up for a long time without being pulled down regularly, all fabrics will fade unevenly. Fabric will fade evenly if blinds are down during the day, getting even UV exposure. When fading occurs in that instance, it is even across the entire fabric and is not noticeable.

The open weave on the sheer section of Vision fabrics may tend to fray. Carefully trim any fray on this fabric with *sharp* scissors. It is important that no rubbing is done on this part of the fabric.

Professional ultrasonic cleaning can be undertaken by specialist cleaning businesses.

○ Warranty

Betta Blinds and Awnings guarantee the quality on all our specified fabrics free from defects for one (1) year from date of purchase. All fabrics manufactured by Betta Blinds are cut using Ultrasonic or Aeronaut Fabric Cutting Technology, this is essential for cutting square and to aid the elimination of fabric fray. Due to this technology we are able to guarantee our fabrics against fault of manufacture.

Betta Blinds guarantee the quality on all our blind components free from defects and/or failure for five (5) years from the date of purchase. The guarantee on Betta Blinds products does not cover defects or damage caused by accidents, alterations, misuse, abuse, wear and tear or failure to comply with cleaning, maintenance and operating instructions.

The sheer section of Vision fabric can tend to fray, and it is the nature of this open weave fabric. Blinds will not be replaced for fraying. It is important that the chain or any other obstacle is not rubbed against the fabric during operation. Betta Blinds does not warranty the fading of fabrics caused by direct and/or indirect sunlight. Under the guarantee Betta Blinds shall not be liable or responsible for incidental or consequential damages or any other direct or indirect damage, loss, cost, expense or fee.

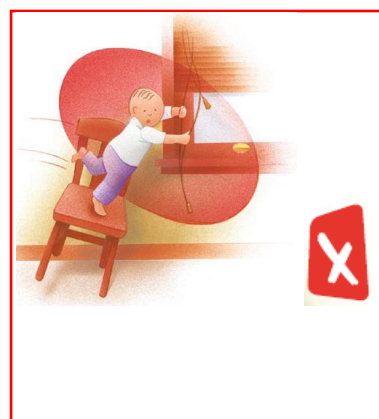
WARNING:

CURTAIN AND BLIND CORDS HAVE CAUSED THE DEATH OF YOUNG CHILDREN AND MUST BE INSTALLED SO THAT THEY ARE NOT A STRANGULATION HAZARD. FOLLOW THE INSTALLATION INSTRUCTIONS

Keep children away from all cords/chains.

Move anything a young child can sit in, stand in or climb on (like cots, highchairs, beds, sofas, tables, chairs and bookshelves) away from cords/chains—even those tied around a cleat, as your child may be able to untie them.

Do not let your child play near cords/chains they can easily reach. Never leave your child alone in a room with cords/chains they can reach.



IMPORTANT CHILDREN'S SAFETY REGULATIONS:

- ♦ To avoid creating a possible strangulation hazard for children, the corded internal window covering must be installed in such a way that a loose cord cannot form a loop 220mm or longer at a height of less than 1,600mm above floor level.
- ♦ No part of a cord guide may be installed lower than 1,600mm above floor level unless, the cord guide will remain firmly attached to a wall or structure specified in the installation instructions when subjected to tension force of 70 N applied in any direction for 10 seconds and the cord is sufficiently secured or tensioned to prevent the formation of a loop 200mm or longer.
- ♦ If a cord guide is installed lower than 1,600 above floor level it must be designed to prevent a child from being able to remove the cord.
- ♦ If a cleat is used to secure the cord it must be at least 1,600mm above floor level because a child is capable of unwinding a cord from a cleat.
- ♦ **The person installing a corded internal window covering must attach a label to the corded window covering containing the name and contact details of the person or company responsible for the installation.**
- ♦ **They also must ensure that any warning label or swing tag supplied with the corded window covering remains attached to the cord.**

INSTRUCTIONS FOR THE CLIENT

Easy to use, a single control is used to slide the opaque and translucent woven stripes past each other. The same operation is used to raise or lower the window blind to any height in the window with ease, in the same way the classic roller blind would. A sheer vision blind will also roll up fully into the attractive cassette headrail to reveal an uninterrupted view to the outside.

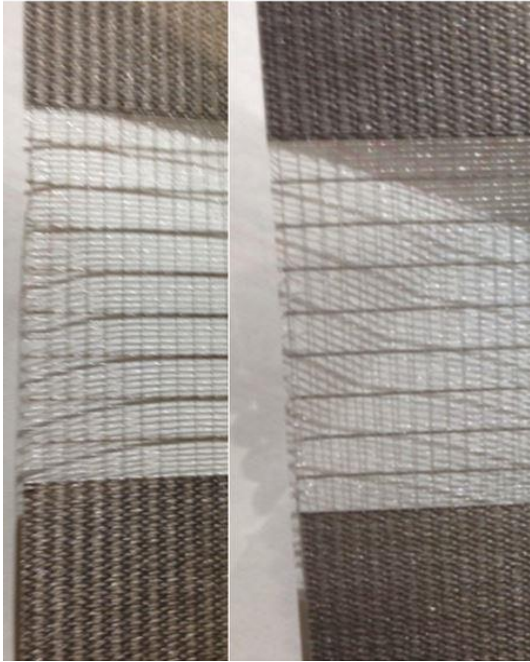
Sheer Vision Blinds Fabric: See close up photos of the Capri fabric which shows the inherent nature of the fabric and the open weave. The cut edge cannot be heat sealed and there is no fabric sealant that is compatible with the fabric.

The fabric does have a tenancy to fray, as it is the nature of this delicate open weave, and as such it is within manufacturing acceptances. Blinds will not be replaced for fraying of this type.

Carefully trim any fray on this fabric with very sharp scissors. It is important that no rubbing is done on this part of the fabric.

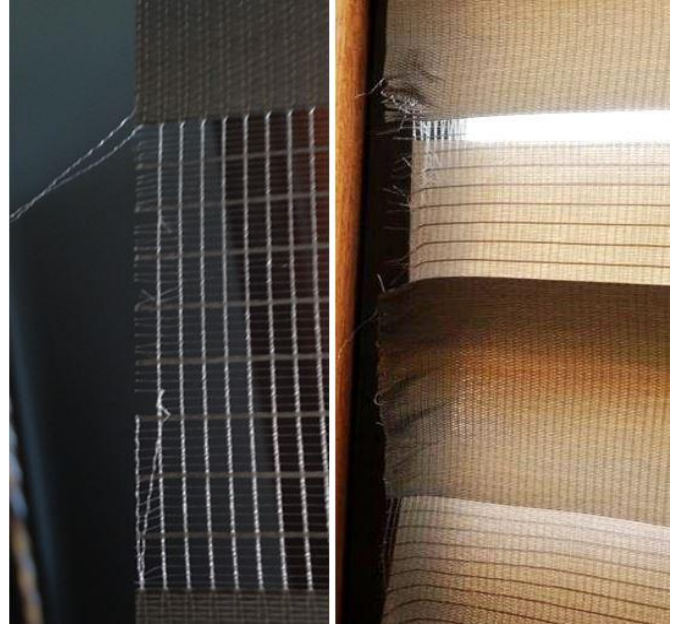
The chain should **never** be pulled on an angle, just straight up or down in a vertical motion. This stops fabric being damaged, limits noise, and allows blind to lift evenly.


If there is a manufacturing fault and the fabric is damaged, as in Pic. 4, the blinds will be replaced. In this example fabric was caught within the mechanism.



Pic. 1 

Pic. 2 



Pic. 3 

Pic. 4 