

Please ensure your installers are fully aware of the **Australian Mandatory Standards for Corded Blinds**. Please direct them to the Product Safety Australia website: [Click Here](#).

[Click here](#) to download child safety brochure for your retail customers.

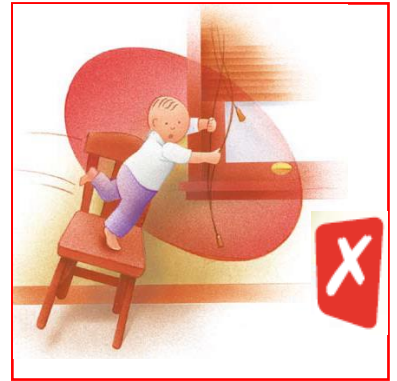
WARNING:

CURTAIN AND BLIND CORDS HAVE CAUSED THE DEATH OF YOUNG CHILDREN AND MUST BE INSTALLED SO THAT THEY ARE NOT A STRANGULATION HAZARD. FOLLOW THE INSTALLATION INSTRUCTIONS

Keep children away from all cords/chains

Move anything a young child can sit in, stand in or climb on (like cots, highchairs, beds, sofas, tables, chairs and bookshelves) away from cords/chains—even those tied around a cleat, as your child may be able to untie them.

Do not let your child play near cords/chains they can easily reach. Never leave your child alone in a room with cords/chains they can reach.



CHILD SAFETY: Trade Practices (Consumer Product Safety Standard) Corded Internal Window Coverings Regulations 2010 (the Commonwealth Regulations):

- ♦ To avoid creating a possible strangulation hazard for children, the corded internal window covering **must** be installed in such a way that a loose cord cannot form a loop 220mm or longer at a height of less than 1,600mm above floor level.
- ♦ A cord guide may be installed lower than 1,600mm above floor level if the cord is sufficiently secured or tensioned to prevent a loop.
- ♦ If a cord guide is installed lower than 1,600 above floor level it **must** be designed to prevent a child from being able to remove the cord.
- ♦ If a cleat is used to secure the cord it **must** be at least 1,600mm above floor level because a child is capable of unwinding a cord from a cleat.
- ♦ A label must be attached to the corded window covering *containing the name and the contact details of the company or person responsible for the installation.*
- ♦ You also must ensure that any warning label or swing tag supplied with the corded window covering remains attached to the cord.

Information for Consumers: Staying safe with blind and curtain cords

Loose or looped cords can be extremely dangerous. Parents and carers are urged to take the necessary steps to ensure blinds and curtains in your home don't pose a threat to your children.

Installing or fixing blinds and curtains at home

- When installing new blinds and curtains, make sure you or the installer secures any loose or looped cords—do not leave them hanging down.
- Some blinds can't operate properly without looped cords. To keep them out of children's reach you should secure these cords with either:
 - tie-downs (cleats), or
 - tension devices that enclose cords and chain loops.
- You can get tie-downs and tension devices from hardware or window furnishing stores.
- Always fix tie-downs and tension devices firmly to the wall or window-frame so a child is not able to remove it. Never use materials that can't support a load, such as double-sided tape or glue.

Safety at home

- Go through every room in your home and check for any blinds or curtains with long cords that are either loose or looped. Remember, this includes any cords that are within children's reach at floor level or near furniture they can climb on.
- Do not put children's cots, beds, highchairs or playpens near a window where children can reach the blind or curtain cords. The cords can get around children's necks and strangle them while they are playing or sleeping.
- Do not place sofas, chairs, tables, shelves or bookcases near windows with corded blinds or curtains. Young children often like to climb onto furniture to look out the window. If they can reach the cords, they may quickly become entangled in them, lose their footing and suffer strangulation or serious injuries.
- Make sure blind and curtain cords are not hanging anywhere within children's reach. Loose cords can easily wrap around and strangle children who are jumping, playing or climbing nearby.
- Always supervise children in any rooms with reachable blind or curtain cords. Accidental strangulation can happen very quickly, so never leave children alone in these rooms, even for a short while.

Staying safe in a rental home

- If you are living in a rental property, seek help from your landlord or agent to ensure cords and chains are out of reach.